

Can be mounted inside the attic over an existing gable vent or roof penetration to supercharge the vents already there. Remains hidden and out of the weather, except for the roof mounted solar panel .  
No large holes to cut in your roof.



## Technical Information

### Weight

Fan Weight: 5 lbs / 2.26 kg

Fan Packaged: 18 lbs. / 8.16 kg

### Performance

Air Flow Rate:  
900 to 1200 CFM  
Depending on solar exposure

Ventilation: Up to 1250 sq.ft.  
Attic must support intake air  
for best performance

### Electrical

Solar Panel: 27 watt, 17 to 22 DC,  
1.25 amp, 36 mono-crystalline  
cell, solar cells with black back  
sheet

Motor: Solaro Max Aire  
Brushless DC Motor, 10-22VDC

### Material

Housing System: Spun Formed,  
Aircraft Grade Aluminum  
Fan Blade: 12" Aluminum, Factory Balanced  
Mesh Screen: Stainless Steel, 1/4"  
Mesh, Rodent Control  
Wiring: 18 Gauge Copper Conductors  
with PVC Insulation



### Housing & Flashing System

Aircraft grade, spun-formed  
aluminum for the utmost  
quality protection

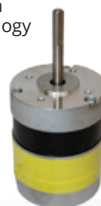
Inner housing system is  
aerodynamically designed  
to produce the highest  
possible radial air exhaust  
Powder coated outer shell



### Solaro Max Aire Motor

Maximum Efficiency Yield Technology

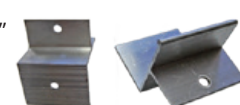
Brushless Electronic Motor with Maximum  
Yield Technology. This new motor technology  
was developed by Solaro Energy - Our  
engineers leveraged lessons learned  
from our original brushless electronic  
motor that we used for over 12 years.  
This new motor technology offers about  
30% better efficiency and air moving  
performance, with an amazing 100,000  
hours average motor run time!



## Components

### Solar Panel Brackets

Extruded Aluminum  
Mill finished  
Dimensions depth 0.60"  
2"x2"  
Supports solar panel



### Solar Panel

27 watt, 1.25 amp proprietary,  
high purity, mono-crystalline  
cell solar panel  
Weather proof in the most  
severe conditions  
High transparent, low iron  
tempered glass  
Built for maximum performance and safety



### Fan Blades

Specifically designed for the  
Solaro Aire solar powered  
ventilation system  
12" - 5 blade aluminum fan,  
aerodynamically optimized  
blade to improve airflow  
Operates whisper quiet  
throughout the day

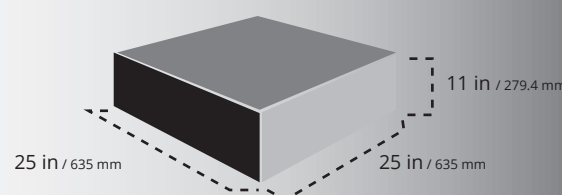
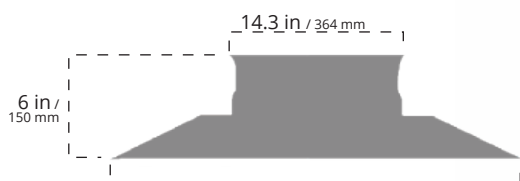


### Interconnect Cable

Wire: 25' - 2 Conductor  
18 Gauge stranded copper  
U.V. Rated  
Power transfer cable



## Dimensions & Weight



**Important Note:** The Solaro Aire Attic Fan Ventilation System is 100% fire proof and all electrical components are hidden under the air diverting cowling creating an extremely safe and efficient ventilation system

**Limited Lifetime Warranty** - See warranty details for additional information.